

# Overcoming challenges of the Swedish health care systems - advancing IPL/IPC

Susanne Kvarnström, PhD, Human Resources Senior Officer,  
Region of Östergötland

Johanna Dahlberg, PhD, Senior Lecturer, Linköping University



# Region Östergötland

Fourth most populous region of Sweden  
442,000 citizens 13,000 employees

All three hospitals are top-ranked in Sweden

Allocation of SEK 12,3 billion

Region-wide specialist health care 39%

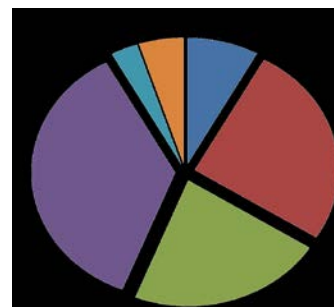
Local health care 27%

Primary care 19%

Highly specialised care 7%

Dental care 2%

Other 6%





# National challenges and strategies for Health Care

- Public health in Sweden is good, but unevenly distributed among citizens
- Poor performance: person-centered care, coordination and availability compared to other countries  
(International Health Policy Survey, IHP, 2014)
- Competence supply management and effective use of health worker human resources
  - Never had more resources than today. Real growth of 1-2% / year
  - Never had a more doctors  
(3,9/1000 citizens – 3,4/1000 EU, OECD 2012)
  - Never had more nurses
  - Staffing imbalances



# National strategies

- New Patient Law 2015, i.e. Patients' Rights Act
- E-health for accessible and secure information
- National infrastructure for patient safety, quality registers and open comparisons
- A national coordinator for the efficient use of resources
  - Ways of working that supports the patient throughout the continuum of care
  - Organization and teamwork
  - Task-shifting
  - Cultural changes

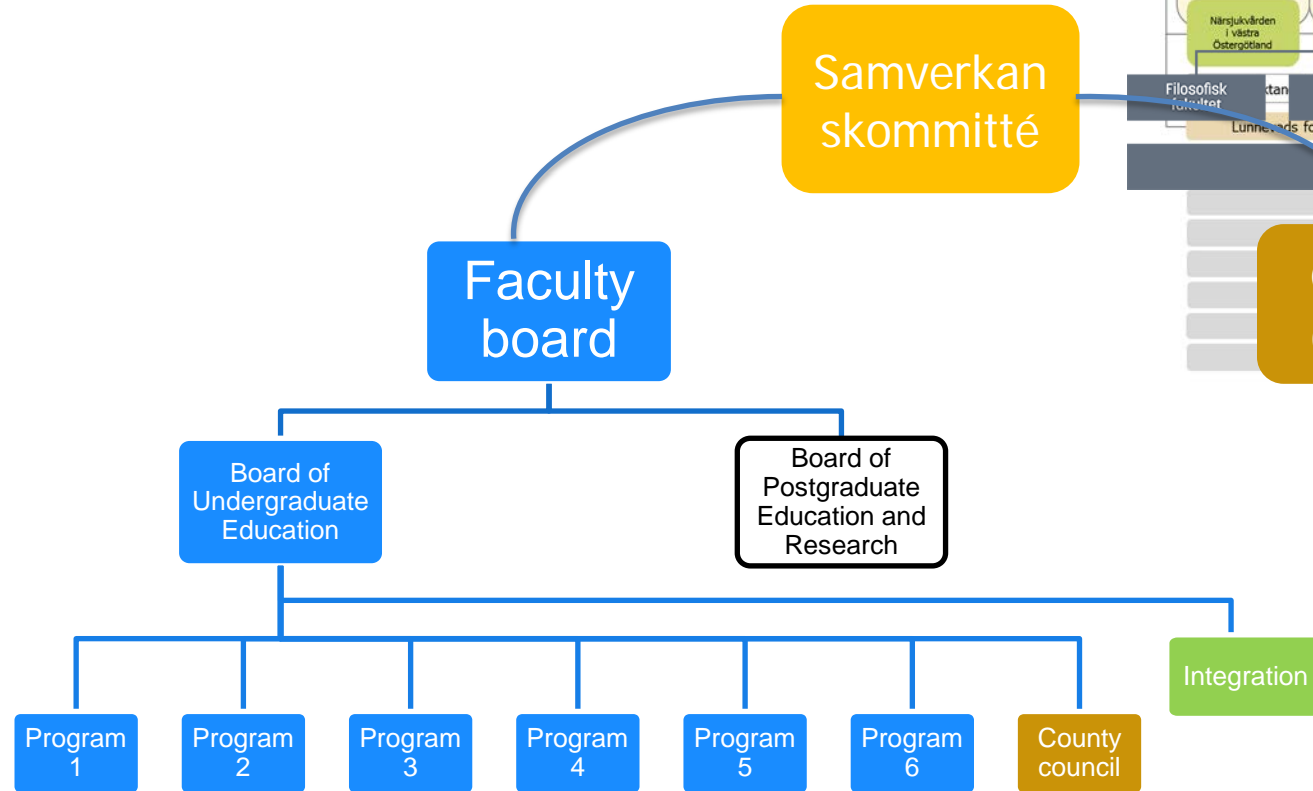


# Drivers for IPL/IPC in Sweden

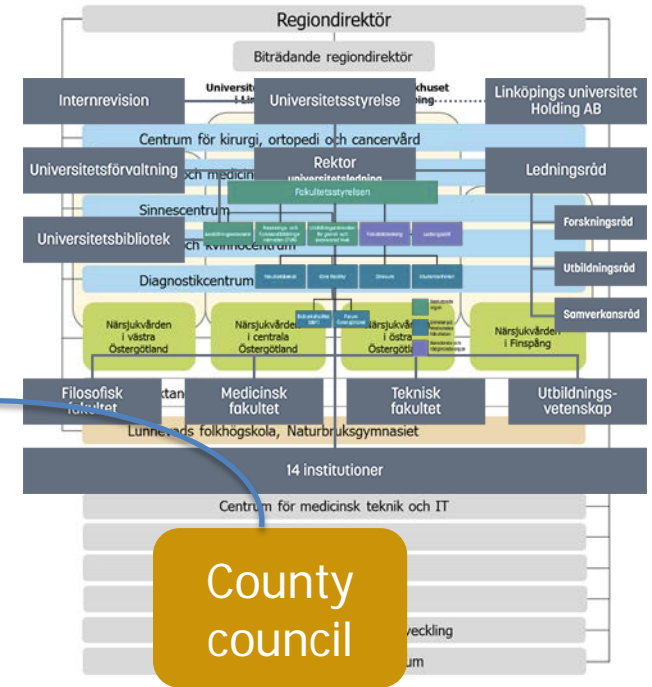


- No White papers, so far
- **The Swedish Higher Education Authority (UKÄ)**  
“Collaboration and teamwork with other professionals”:  
a quality aspect when evaluating higher education health programs
- **Person-centered care** & patient participation
- **Staffing imbalance** & need for efficient use of resources
- **Evidence-based national guidelines** often include IPC
- Collaboration between the **professional Societies**  
on core competencies (IOM, QSEN)

# Organisation



Samverkan  
skommitté



County  
council

